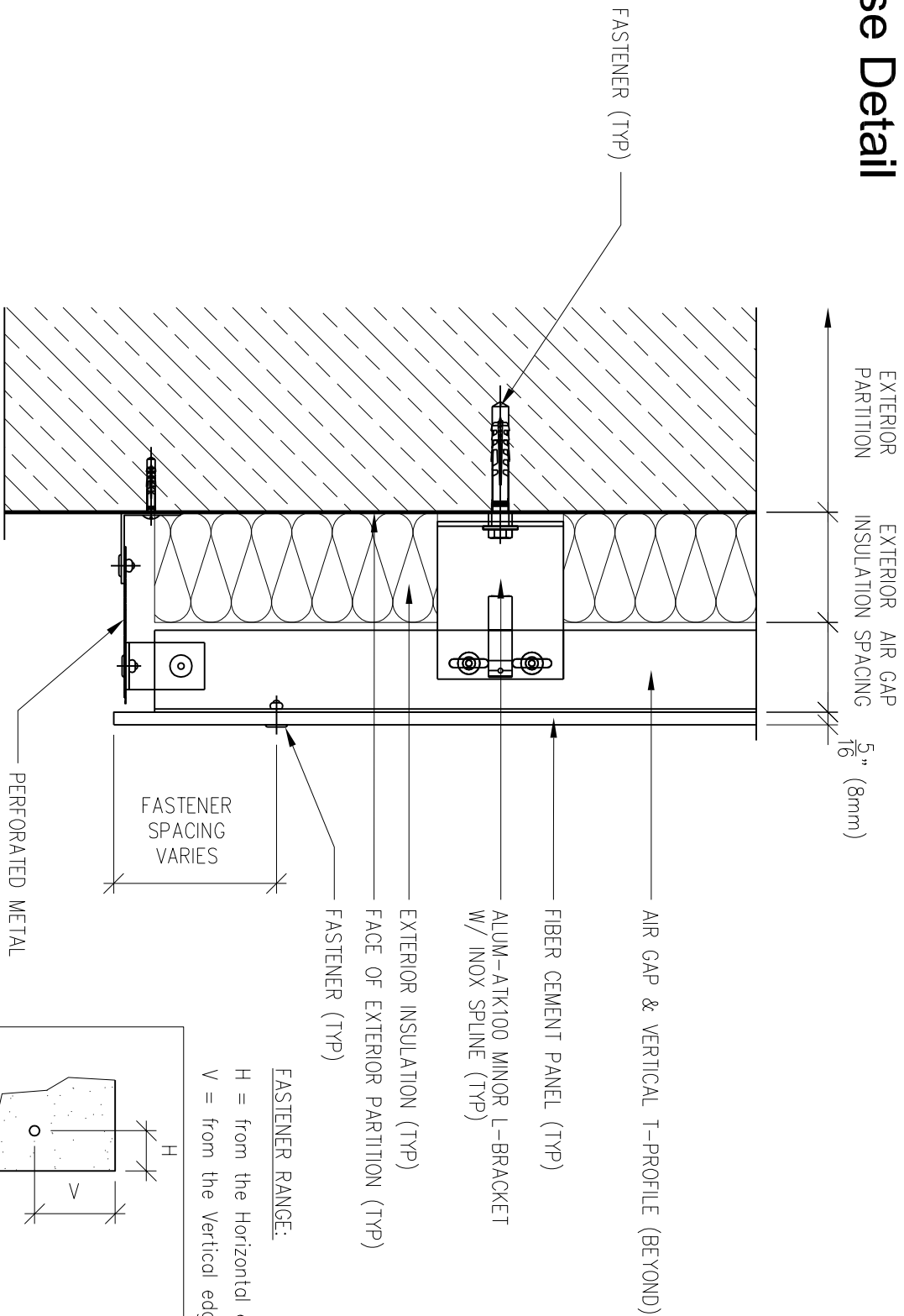
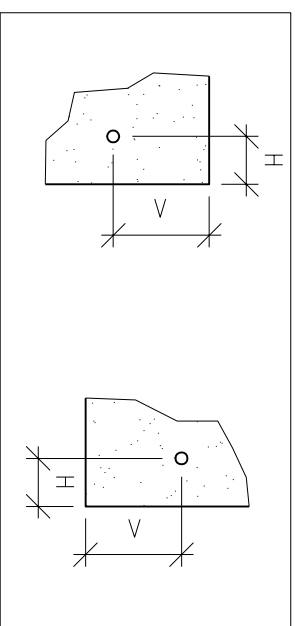


# Base Detail



FASTENER RANGE:  
 H = from the Horizontal edge  
 V = from the Vertical edge



H = 40mm - 100mm      V = 70mm - 100mm  
 H = 1 9/16" - 3 15/16"      V = 2 3/4" - 3 15/16"

NOTES:  
 1. PANEL VERTICAL AND HORIZONTAL JOINT SPACING SHOULD BE 3/8" TYPICAL.

Scale: 3"=1'-0"



**EASTERN ARCHITECTURAL PRODUCTS, LLC.**

213 Front Street - Zellenople, PA - 16063  
 1-(888) 5-PANELS      FAX: 1-(717) 939-4646      www.fiberacementproducts.com

Ref.: alum ATK100 minor base detail

Date: 5/10/2009