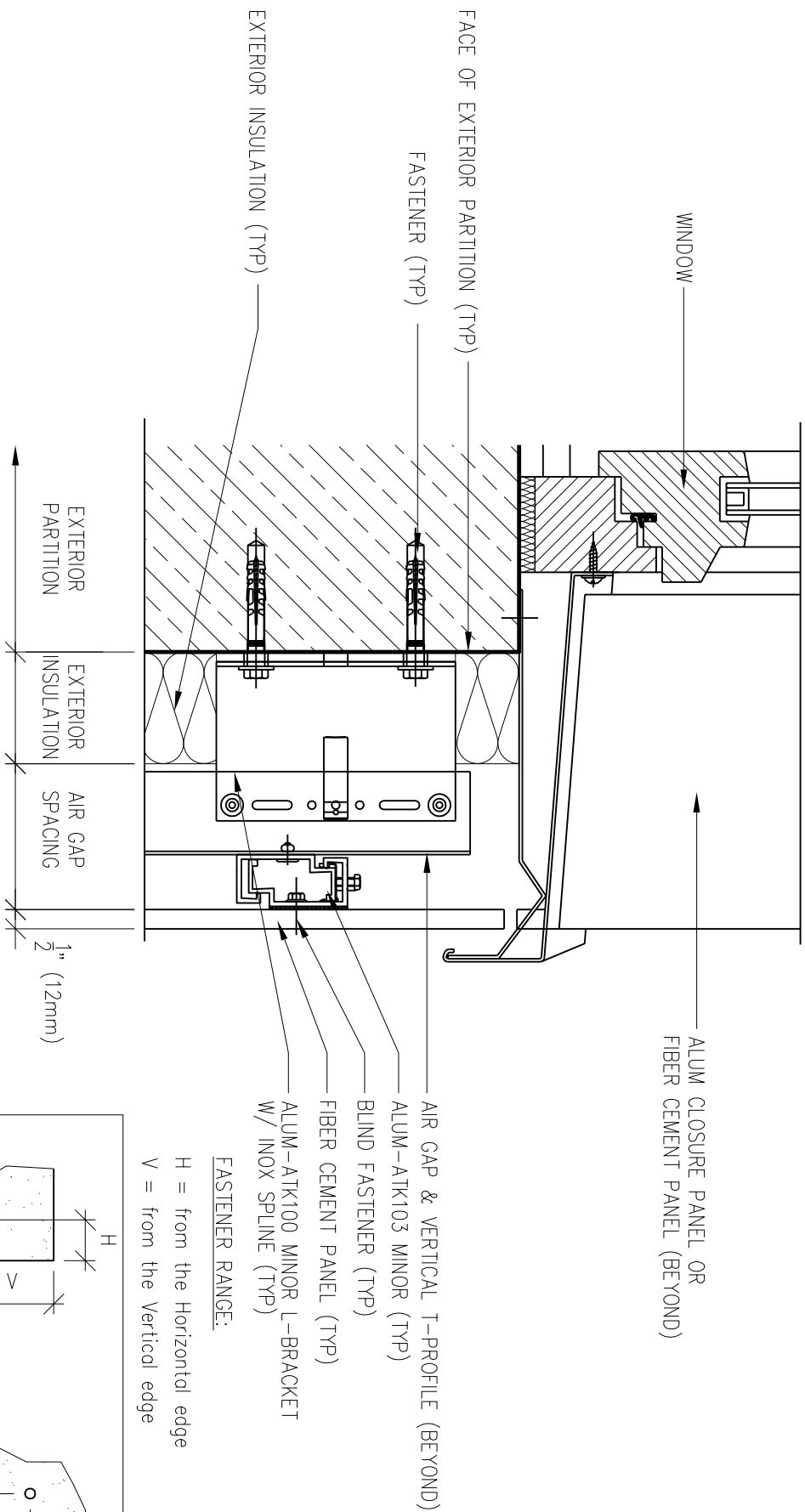
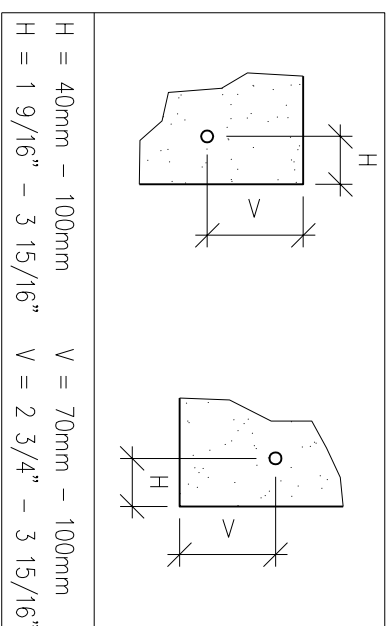


Window Sill Detail

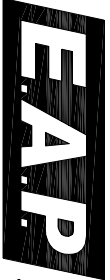


- ALUM CLOSURE PANEL OR FIBER CEMENT PANEL (BEYOND)
 - AIR GAP & VERTICAL T-PROFILE (BEYOND)
 - ALUM-ATK103 MINOR (TYP)
 - BLIND FASTENER (TYP)
 - FIBER CEMENT PANEL (TYP)
 - ALUM-ATK100 MINOR L-BRACKET W/ INOX SPLINE (TYP)
- FASTENER RANGE:**
- H = from the Horizontal edge
 - V = from the Vertical edge



Scale: 3"=1'-0"

NOTES:
1. PANEL VERTICAL AND HORIZONTAL JOINT SPACING SHOULD BE 3/8" TYPICAL.



EASTERN ARCHITECTURAL PRODUCTS, LLC.

213 Front Street - Zellenople, PA - 16063

1-(888) 5-PANELS

FAX: 1-(717) 939-4646

www.fiberacementproducts.com

Ref.: alum ATK100 minor and alum ATK103 minor window sill detail

Date: 5/10/2009